

Grange Park  
School's Right of  
the week.



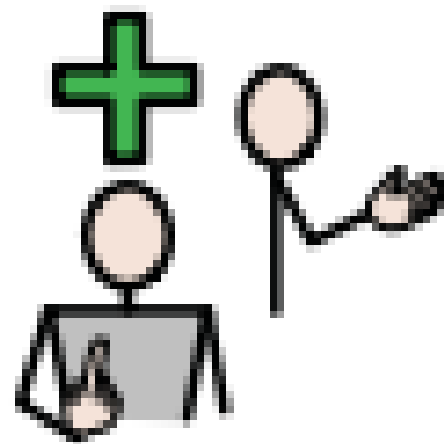
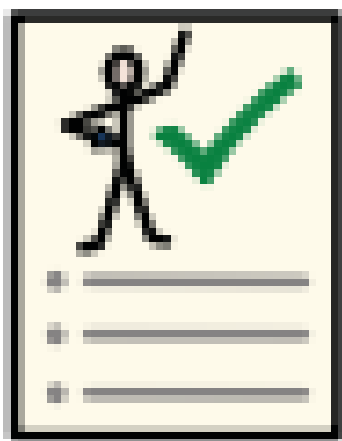
39.

I have the right to help if I have been hurt, neglected or badly treated.



If I have been hurt, neglected or badly treated I should get special help to make me feel better.

For example - I have the right to be given support if I have been effected by a war or natural disaster.





# What is it like to live through an uncertain time?



Raul Moreno/SOPA Images/Shutterstock



## Let's look at this week's story

Scientists monitoring a volcano in Iceland have said an eruption could happen. The Fagradalsfjall volcano previously erupted two years ago, in 2021 - the first time in over 800 years. It is now thought that the volcano is the cause of a series of earthquakes, which started this October. An underground river of magma led to the evacuation of 4,000 people from the town of Grindavik and Iceland has declared a state of emergency. People who live there have since been allowed to return just to collect belongings, with the likelihood of eruptions remaining high.



Learn more about this week's story [here](#).  
Watch this week's useful video [here](#).  
This week's Virtual Picture News [here](#).





## What is happening in Iceland?

The Fagradalsfjall volcano in Iceland has been causing a series of earthquakes and an underground river of magma was discovered in October, leading Iceland to declare a state of emergency.

It is possible that the volcano will erupt, impacting the neighbouring settlement of Grindavik.

## How have people prepared for an eruption?

Grindavik, a town in Iceland with about 4,000 inhabitants, is roughly 2 miles from where the earthquake activity has been recorded. It has now been evacuated, ahead of the possible eruption, to ensure people are kept safe. Residents were allowed back to their homes to collect belongings but people have been told to leave once again as the likelihood of eruptions is 'remaining high', according to the Icelandic Meteorological office.

Dr Bill McGuire, professor emeritus of Geophysical & Climate Hazards, UCL, said: "Grindavik is very close to the position of the new fracture, and its survival is far from assured."

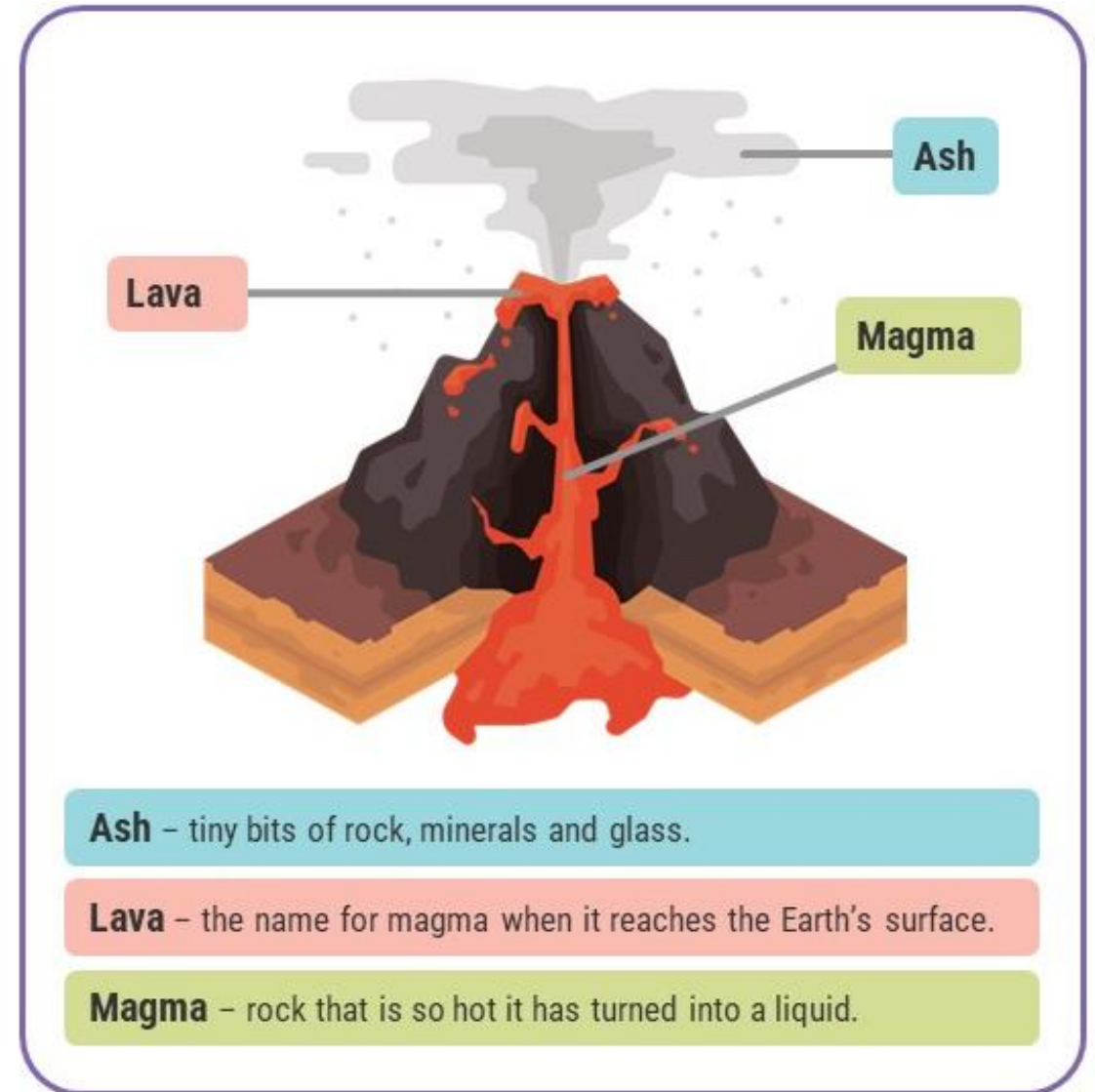


Cracks emerge on a road due to volcanic activity near a police station, in Grindavik, Iceland. **Source:** RUV/Ragnar Visage.

**Talk about how the people living there may be feeling.**

A volcano is an opening of the Earth's crust (the outside layer). It can allow magma, hot ash and gas to escape.

Volcanoes can look like hills or small mountains.

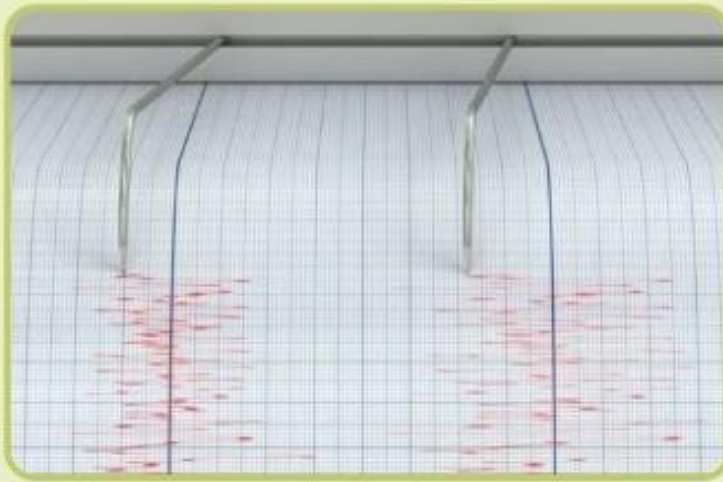


**Is there anything else you would like to find out about volcanoes?**



## Seismometer

A seismometer detects seismic waves (shockwaves) from the ground caused by earthquakes. Measuring earthquakes occurring near a volcano can help scientists predict when it might erupt.



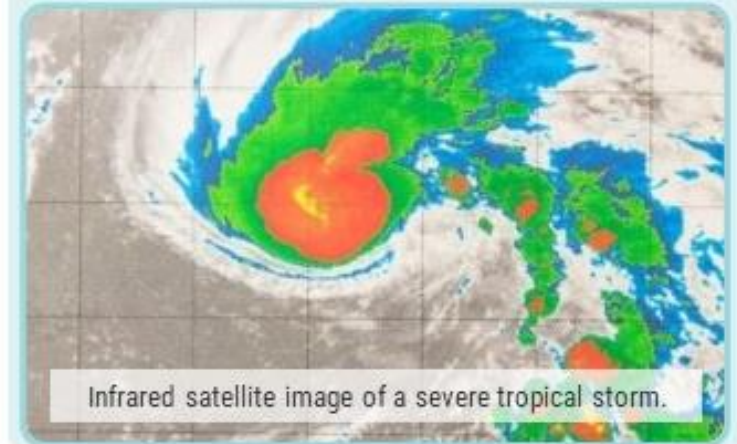
## Global Positioning System (GPS) satellites

GPS satellites are used to detect and track extreme weather events such as floods, hurricanes, strong winds, and drought. Meteorologists can monitor the progress of these events and provide warnings to emergency services and people living in areas that may be affected.



## Tiltmeters

A tiltmeter is a highly sensitive instrument used to measure the slope or tilt of the ground. They can be used for things such as monitoring volcanoes or the small movements of potential landslides.



Infrared satellite image of a severe tropical storm.

**Can you think of any other technology that is used to predict natural disasters?  
How valuable do you think these technologies are?**

# Reflection



Predicting a volcanic eruption, which can cause huge devastation to its surrounding area, is hard. Like many unpredictable situations that can make life difficult, a lot of resilience and planning ahead can help to ensure safety and a positive outcome.







# UN Rights of a Child



Natural disasters can cause harm to people – their possessions, homes and lives. We have the right to get help if we have been hurt so we can get back our health and dignity.



# British Values

4<sup>th</sup> - 8<sup>th</sup> December 2023

## Rule of Law

Sometimes rules, such as not allowing people to stay in their homes will be introduced in response to an event. They are put in place to protect people and keep them safe.