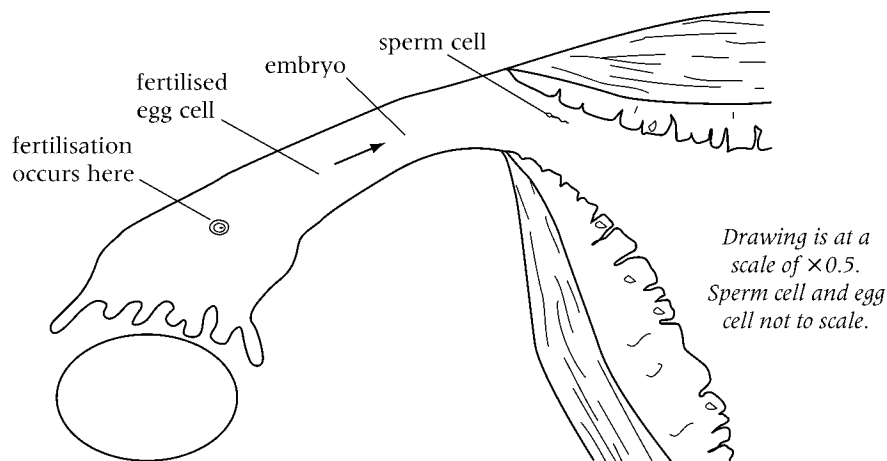


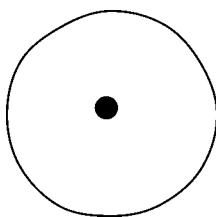
7Bc/4 Making an embryo

Name _____ Class _____

- 1 The place where fertilisation normally occurs is marked on the diagram. Sperm cells start swimming when they get to the oviduct. A sperm cell is marked. Sperm cells swim about 1 mm in every minute.



- a Work out how long it would take for the sperm cell to get to the egg cell. Show your working.
- _____
- b In the places marked on the diagram draw in the fertilised egg cell and the embryo.
- c The fertilised egg cell turns into an embryo by **cell division**. The fertilised egg cell divides into two new cells. These two new cells divide into two more cells each. Draw two more diagrams to show what happens.



fertilised egg cell

- d Look at the last drawing you did. If each of these cells divides into two, how many cells will the embryo now have? _____
- e What is **implantation**? _____
- _____

f On the diagram, label the place where implantation occurs.

2 These sentences are about twins. Write 'true' or 'false' by each sentence.

a Identical twins happen when a fertilised egg cell divides in two, but the two cells split apart. _____

b Identical twins will always be different sexes. _____

c Non-identical twins happen when two egg cells are fertilised. _____

d Non-identical twins can be the same sex or different sexes. _____

e Identical twins happen when two egg cells are fertilised. _____

f Non-identical twins happen when egg cells turn into embryos on their own. _____

[knowledge]