

Creating a simple Pop Art Portrait



LO:

To be able to create a Pop Art Portrait

- Follow the steps to create a Pop Art Portrait

You will need:

- A photograph or photocopy of a photograph
- Paper
- Pencils
- Colouring pens or paints
- Tracing paper or grease-proof paper/baking parchment

Note:

It is best to use black and white images that have a strong contrast between their areas of dark and light.

I have used a colour image of the *Mona Lisa* which I photocopied into black and white.

Step 1: Select your image

Start with a photocopy or photograph of the image you wish to use for your Pop Art Portrait.

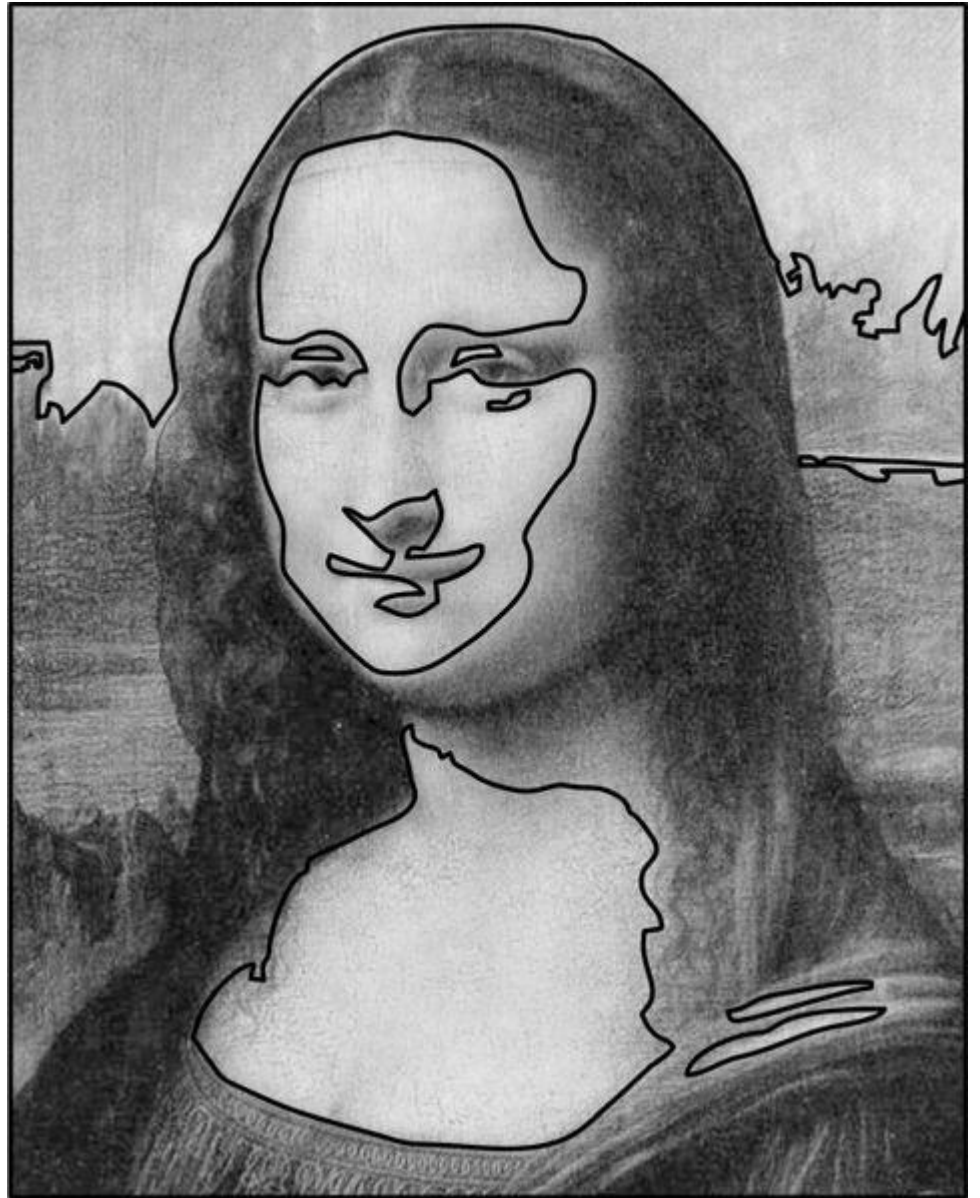
I have chosen a detail of Leonardo's Mona Lisa, the most famous portrait in the history of art, but you could use any image that you want.



Step 2 - Outline the Areas of Dark and Light

Draw an outline to simplify and separate the main areas of dark and light in the image.

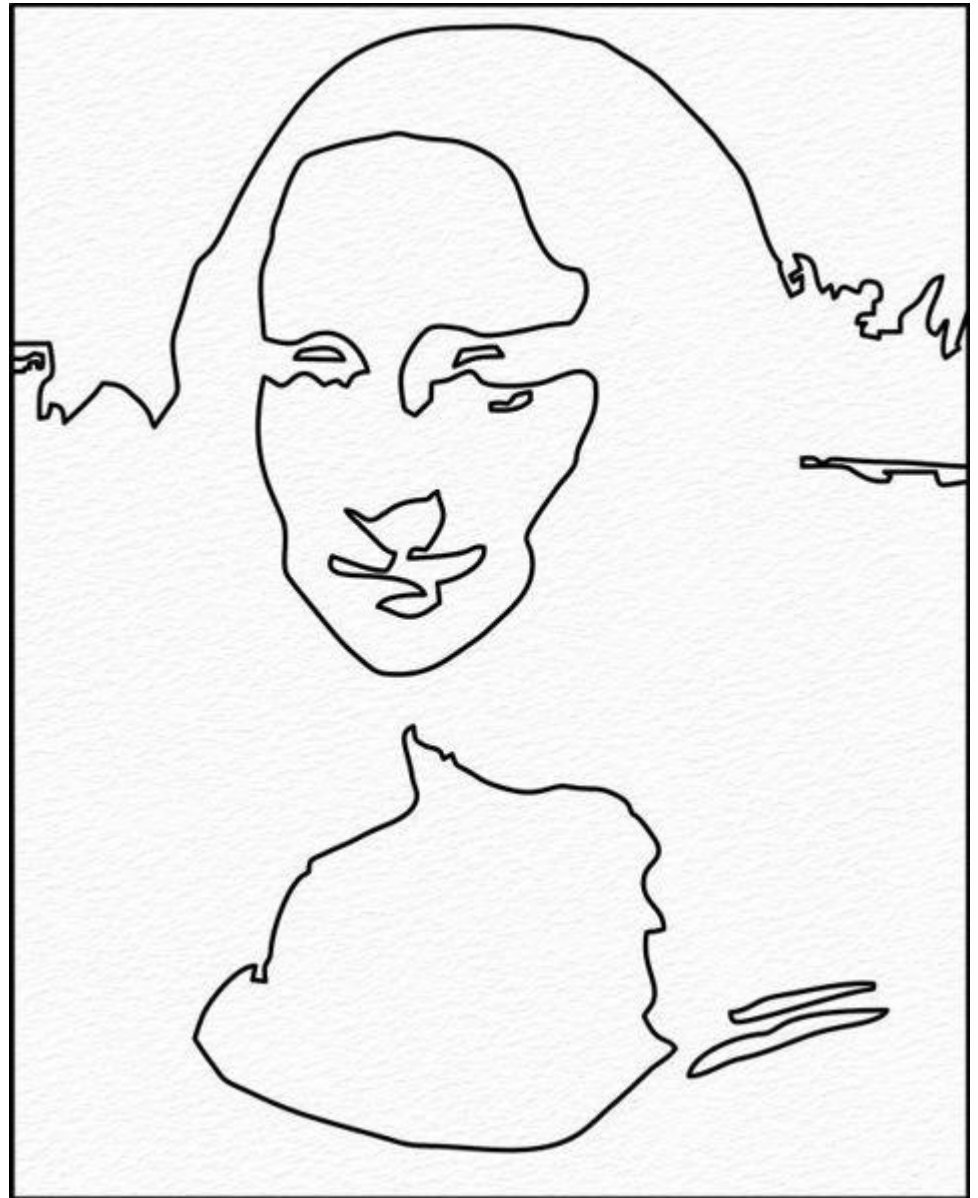
It is best to keep the outline strong and simple without too much detail.



Step 3 - Trace and Transfer

Trace and transfer your outline drawing onto a fresh sheet of paper.

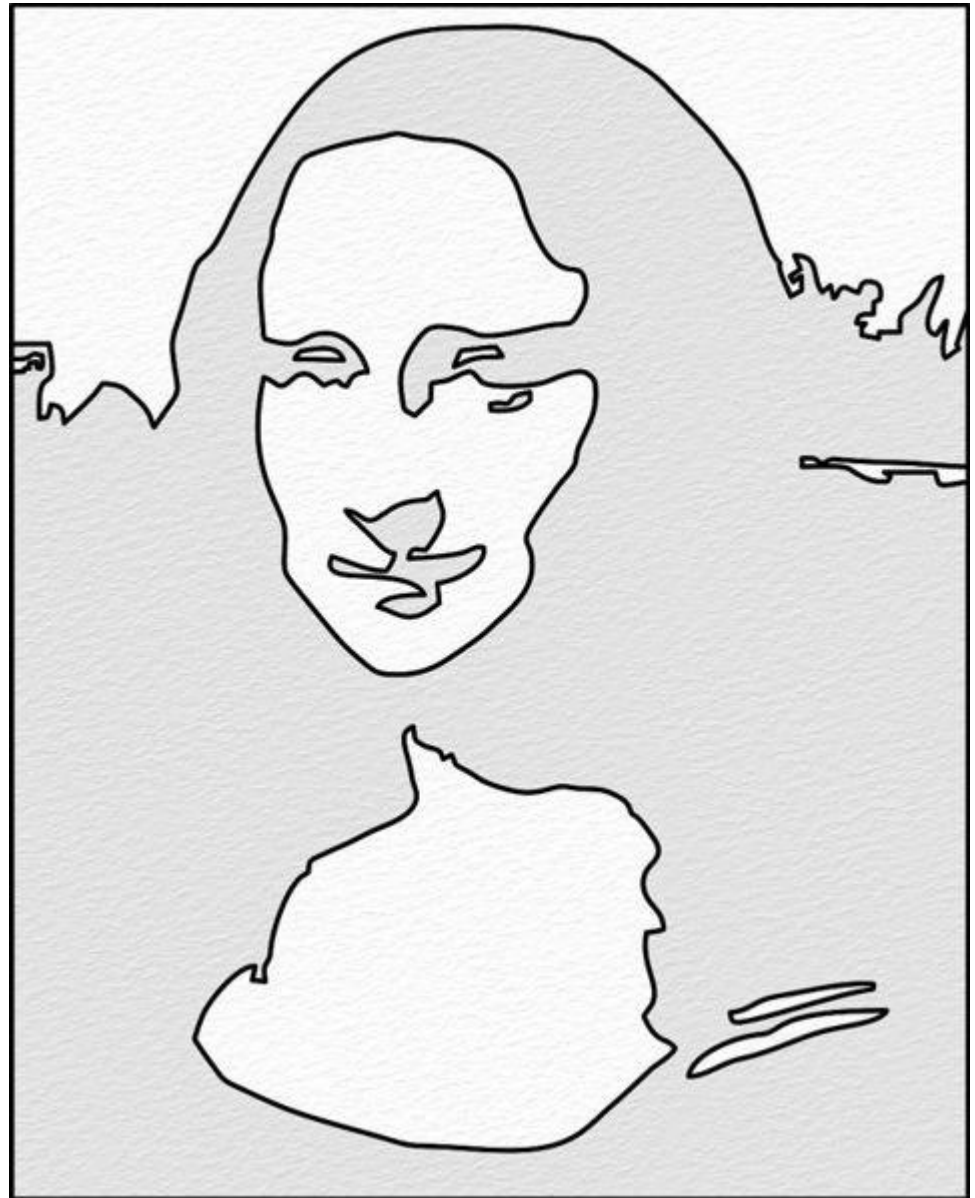
You can do this by using tracing paper, or holding the photocopy up to a window, or a light-box if you have one.



Step 4 - Adding Tone

Shade in the dark areas of your drawing.

This will help you when it comes to selecting colours, tone and patterns and for your image.



Your drawing is now ready to use as a template to produce a range of Pop Art Portraits using colour, tone, and pattern.

Task:

Look at the examples on the next pages and have a go at completing your own version.

Send photos of your work to:
office@grangepark.kent.sch.uk

Pop Art Portrait Examples - Colour

In this example, our Pop Art Portrait was created by colouring the template drawing with primary and secondary colours.

Try to select the brighter colours for the lightest tones and darker colours for the darkest tones.



Pop Art Portrait Examples - Pattern

In this example, our Pop Art Portrait was created by filling sections of the template drawing with different patterns.

The central area of the face and the small details were filled with single colours to make them more visible against the strong pattern.

Too much pattern has the effect of camouflaging the image.

Try to select brighter patterns and colours for the lighter tones.



Pop Art Portrait Examples - Tone

In this example, our Pop Art Portrait was created by filling masked sections of the template drawing with **graduated** colours.

Using a soft colour medium like **pastels** which you can blend with a tissue is a good dry method of creating graduated colours.

Key word: **graduate**

a visual technique of gradually transitioning from one colour hue to another, or from one shade to another, or one texture to another.

