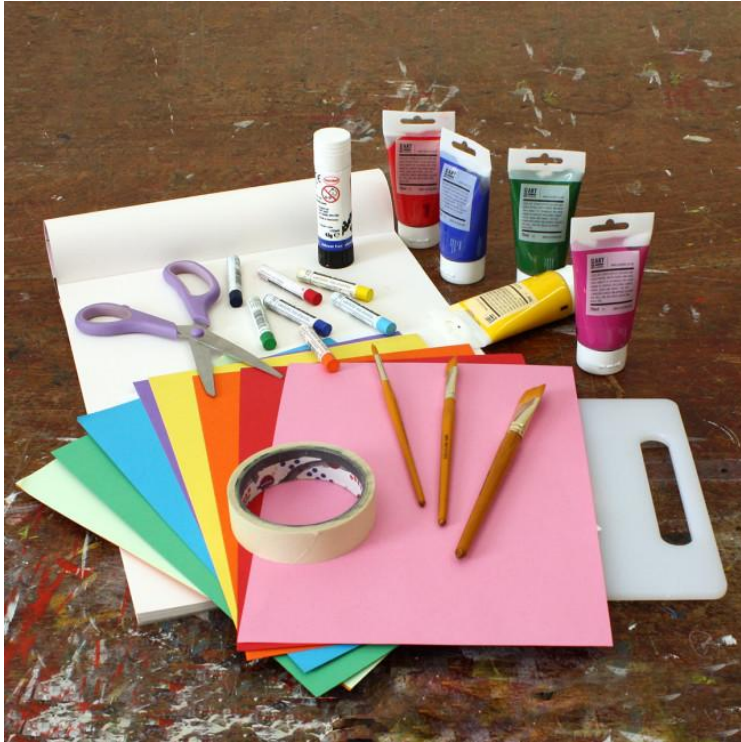


Art Activity 1

Creating a collage portrait

Materials

3 printed copies of your portrait photo or a 3 large photos from a newspaper or magazine - one to paint on, one to collage with and one to look at for inspiration. You could use A3 or A4.



Coloured paper or card - to cut for collage

Thick paper - for your collage base

Paint - that matches the colour of your portrait photo. Any type will work (I use acrylics)

Paint brushes - to mix and paint

Water pot - to clean brushes

Mixing tray - to hold and mix paint on, we used a small kitchen cutting board **OR you can use baking parchment/grease proof paper**

Pastels - for making heavy lines on top of your painting or collage. Soft pastels can be used to add highlights as well. **Both are optional for this activity**

Scissors to cut your photo and collage paper

Glue stick for sticking your collage pieces down

Masking tape to stick down your photos and your base paper

Activity 1: cut and collage a portrait

**Take a photograph portrait of your subject
or use a photo from a magazine**

If you take a photo, think about the background behind the subject you have chosen, the clothes they are wearing and the objects or pets that they might want to hold.

Is the background a contrasting colour to their outfit?

Could they wear something that says a lot about them?

Try to choose an outfit, background and objects that say something about their personality or what they like doing.

I chose a friend and her pet lobster!



Pick a coloured paper to match your portrait

Have a good look at your photo.

What colours stand out?

Think about all aspects of the portrait, the background, the face and their clothes.

Match up pieces of your coloured paper to the colours you can see in your photo and put these papers aside.



Cut out the shapes in your photo

Using your scissors (or an adult if you need help), cut out sections of the photo into blocks of colour.

I cut out:

the shirt as one piece,

the hair as another,

the background,

the parts of her face like mouth and eyebrows,

and her glasses as well.



Cut matching shapes out of coloured paper

Hold (or tape) your photo piece on to the matching coloured paper.

Cut around the shape (or ask an adult to help).

It may be helpful to put each shape you cut out on top of one of your printed photos to remind you which shape goes where!



Collage your shapes onto your card

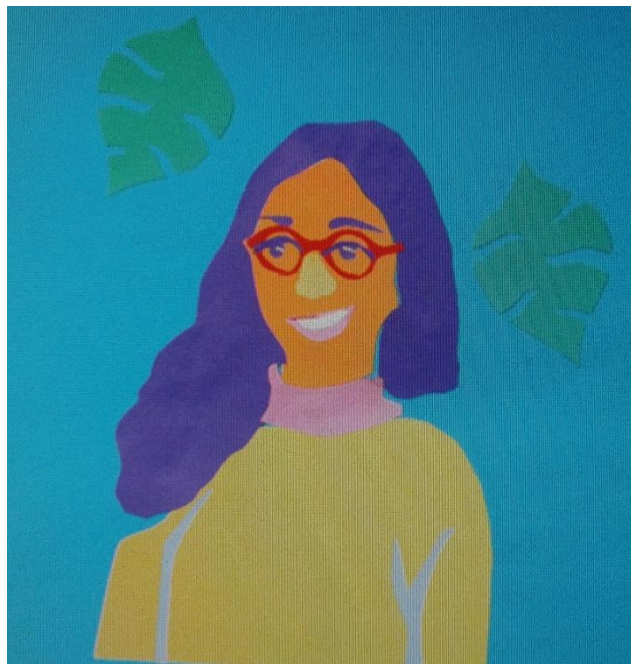
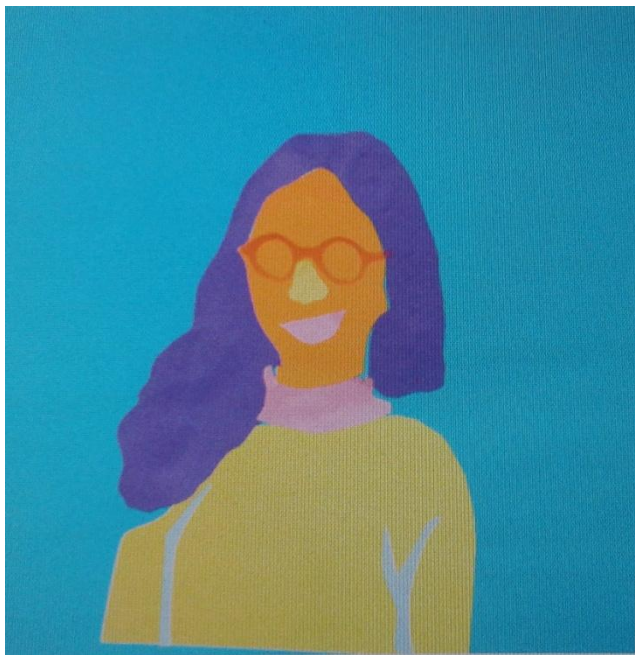
This part is a bit like putting a puzzle together!

Starting with the biggest shapes, glue and stick them onto your card, matching up and stacking all the pieces.

You can mix the coloured paper pieces with some of the photo pieces, or just use the coloured paper.



Here's how my collage portrait came together...



How did yours turn out? Share it with us by emailing your work to:
office@grangepark.kent.sch.uk

Activity 2

Painting over a portrait

Activity 2: use paint and pastel over a photo

Paint on your photo printout using large block shapes

Using one of your photo printouts, mix some paint to match the colours in your photo.

You can cover the whole photo with paint or leave some parts as photo. See what you think works.

Try to focus on the big blocks of colour.

If you already used the image to make a collage, it might help you choose your colours.



Use pastels to add lines

Once the paint is dry, you can use oil pastels on top of paint to add thick, heavy outlines or to add accents on parts of your painting.





Finished portrait

Don't forget to share your finished portrait with us by emailing your work to: office@grangepark.kent.sch.uk

Here are a few more ideas for your collage or painted portraits



Try just using your subject's profile or outline. Can you still recognise them?



Experiment with the composition and add in more features!



You don't have to fill in all the details in your collage



Mix parts of the photograph with coloured paper. Play with negative space!



Keep it simple with block colours



Try styling your subject with bright colours and patterned fabrics

